



# **FASTTRACK FOR IMPLEMENTING SAPLINK**

delivered by

**Enterprise Business Consulting Ltd.**



[www.ebc.hu](http://www.ebc.hu), [www.saplinkconverter.com](http://www.saplinkconverter.com)

Created at May 30, 2018, Budapest

This Guide is the exclusive property of E.B.C. Ltd. It can be copied, transmitted or disclosed by any means without the expressed written consent of E.B.C Ltd. By accepting a copy hereof, the recipient agrees to be bound by these conditions. This document is provided without a warranty of any kind, either express or implied.

## Content

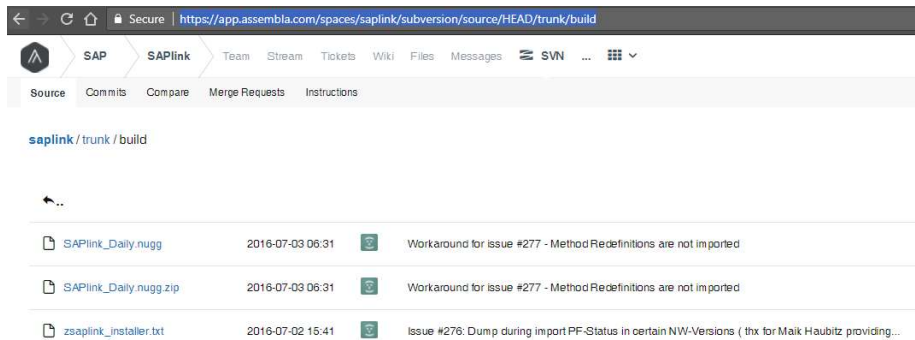
Install SAPlink core: .....	2
Install SAPlink Plugins:.....	4
Check installed objects for SAPlink.....	9
Supported object types by SAPlink converter .....	11
Disclaimer and Liability Notice.....	13

## Install SAPlink core:

This Article helps how to quickly implement SAPlink solution into a SAP Netweaver system. This implementation guide was created on a SAP Netweaver 7.50 system. As an attachment to this document you can find all necessary files for this implementation.

**Latest commit level available as of 25.05.2018 is 399.**

<https://app.assembla.com/spaces/saplink/subversion/source/HEAD/trunk/build>



Latest Daily files have been released: 03.07.2016

Start SE38 transaction and Create Report ZSAPLINK\_INSTALLER.

Copy source code.

Correct line 4552 in Method CREATE\_PFSTATUS.

```
4544 | * Update the gui status
4545 |   _program = _objname.
4546 |
4547 |   xtrkey-obj_type = 'PROG'.
4548 |   xtrkey-obj_name = _program.
4549 |   xtrkey-sub_type = 'CUAD'.
4550 |   xtrkey-sub_name = _program.
4551 |
4552 |   xadm-actcode = 'X'. " Issues #276
4553 |
4554 |   call function 'RS_CUA_INTERNAL_WRITE'
4555 |     exporting
4556 |       program = _program
4557 |       language = sy-langu
4558 |       tr_key = xtrkey
4559 |       adm = xadm
4560 |       state = 'I'
4561 |     tables
4562 |       sta = ista
4563 |       fun = ifun
4564 |       men = imen
4565 |       mtx = imtx
4566 |       act = iact
4567 |       but = ibut
4568 |       pfk = ipfk
4569 |       set = iset
4570 |       doc = idoc
4571 |       tit = itit
4572 |       biv = ibiv
4573 |     exceptions
4574 |       not_found = 1
4575 |       others = 2.
```

To

```

4552 *   xadm-actcode = 'X'. " Issues #276
4553
4554 xadm-actcode = '1'. "Correction by Enterprise Business Consulting Ltd.
4555 "Standard FM RS_CUA_INTERNAL_WRITE call cause a ZCX_SAPLINK exception!!!
4556 "Form CHECK_ADM can understand numbers for ACTCODE parameter, otherwise check fails!
4557
4558 call function 'RS_CUA_INTERNAL_WRITE'
4559   exporting
4560     program = _program
4561     language = sy-langu
4562     tr_key = xtrkey
4563     adm = xadm
4564     state = 'I'
4565   tables
4566     sta = ista
4567     fun = ifun
4568     men = imen
4569     mtx = imtx
4570     act = iact
4571     but = ibut
4572     pfk = ipfk
4573     set = iset
4574     doc = idoc
4575     tit = itit
4576     biv = ibiv
4577   exceptions
4578     not_found = 1
4579     others = 2.
4580

```

Activate program

Run program, select the belonging nuggets files.

The result will be:

```

SAPLINK
-----
Installed: CLAS ZCX_SAPLINK
Installed: CLAS ZSAPLINK
Installed: CLAS ZSAPLINK_NUGGET
Installed: CLAS ZSAPLINK_OO
Installed: CLAS ZSAPLINK_PROGRAM
Installed: PROG ZSAPLINK
Installed: CLAS ZSAPLINK_CLASS

```

### Please Note:

To avoid an error that the implementation of an abstract class does not exist please run the installation a second time.

### Newly installed objects need to be activated manually, as all objects are installed as local and inactive

Goto SE80 for class ZSAPLINK and Activate it!

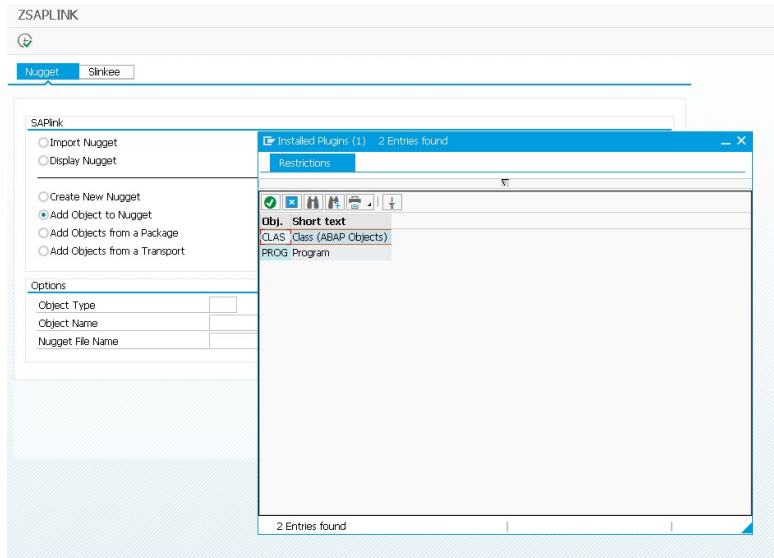
Goto SE38 for ZSAPLINK report and Activate it!

You must click the button labeled "Whole Worklist" to show and select all SAPlink related objects. There are multiple objects that are imported during the initial install and must all be activated for SAPlink to run properly.

## Install SAPlink Plugins:

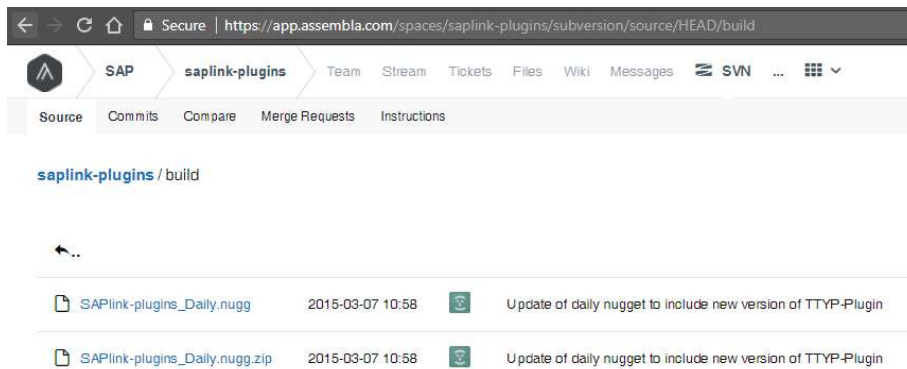
Goto SE38 and start ZSAPLINK report.

Initially you have only two plugins with core SAPlink installation:



Download latest daily plugin:

<https://app.assembla.com/spaces/saplink-plugins/subversion/source/HEAD/build>



Latest Daily files have been released: 03.07.2015

Uploading the daily plugin nuggets file will install the following plugins:

```

SAP
Start import of nugget C:\Projects\SAPlink-plugins\build\SAPlink-plugins_Daily.nugg

CLAS ZSAPLINK_BSP
CLAS ZSAPLINK_UTAG
CLAS ZSAPLINK_DOCUMENTATION
CLAS ZSAPLINK_FUNCTIONGROUP
CLAS ZSAPLINK_MESSAGE_CLASS
CLAS ZSAPLINK_PDF_FORMS
CLAS ZSAPLINK_SICF
CLAS ZSAPLINK_MIME
CLAS ZSAPLINK_SMARTFORM
CLAS ZSAPLINK_TABLE_CONTENTS
CLAS ZSAPLINK_WD_APPLICATION
CLAS ZSAPLINK_WD_COMPONENT
CLAS ZSAPLINK_WD_CONFIG_APPL
CLAS ZSAPLINK_WD_CONFIG_COMP
CLAS ZSAPLINK_INDEX
CLAS ZSAPLINK_LOCK_OBJECTS
CLAS ZSAPLINK_SEARCH_HELPS
CLAS ZSAPLINK_TABLE_TECH_SETTINGS
CLAS ZSAPLINK_TABLES
CLAS ZSAPLINK_VIEW_TECH_SETTINGS
CLAS ZSAPLINK_VIEWS
CLAS ZSAPLINK_ENH_IMPLEMENTATION
CLAS ZSAPLINK_ENH_SPOT
CLAS ZSAPLINK_INTERFACE
CLAS ZSAPLINK_VIEW_CLUSTER
CLAS ZSAPLINK_USER_PARAMETER
CLAS ZSAPLINK_CHECKPOINT_GROUP
CLAS ZSAPLINK_TRANSFORMATION
CLAS ZSAPLINK_DOMAINS
CLAS ZSAPLINK_DATA_ELEMENTS
CLAS ZSAPLINK_TABLE_TYPES
Installed: CLAS - ZSAPLINK_BSP
Installed: CLAS - ZSAPLINK_UTAG
Installed: CLAS - ZSAPLINK_DOCUMENTATION
Installed: CLAS - ZSAPLINK_FUNCTIONGROUP
Installed: CLAS - ZSAPLINK_MESSAGE_CLASS
Installed: CLAS - ZSAPLINK_PDF_FORMS
Installed: CLAS - ZSAPLINK_SICF
Installed: CLAS - ZSAPLINK_MIME
Installed: CLAS - ZSAPLINK_SMARTFORM
Installed: CLAS - ZSAPLINK_TABLE_CONTENTS
Installed: CLAS - ZSAPLINK_WD_APPLICATION
Installed: CLAS - ZSAPLINK_WD_COMPONENT
Installed: CLAS - ZSAPLINK_WD_CONFIG_APPL
Installed: CLAS - ZSAPLINK_WD_CONFIG_COMP
Installed: CLAS - ZSAPLINK_INDEX
Installed: CLAS - ZSAPLINK_LOCK_OBJECTS
Installed: CLAS - ZSAPLINK_SEARCH_HELPS
Installed: CLAS - ZSAPLINK_TABLE_TECH_SETTINGS
Installed: CLAS - ZSAPLINK_TABLES
Installed: CLAS - ZSAPLINK_VIEW_TECH_SETTINGS
Installed: CLAS - ZSAPLINK_VIEWS
Installed: CLAS - ZSAPLINK_ENH_IMPLEMENTATION

```

```

SAP
Installed: CLAS - ZSAPLINK_ENH_SPOT
Installed: CLAS - ZSAPLINK_INTERFACE
Installed: CLAS - ZSAPLINK_VIEW_CLUSTER
Installed: CLAS - ZSAPLINK_USER_PARAMETER
Installed: CLAS - ZSAPLINK_CHECKPOINT_GROUP
Installed: CLAS - ZSAPLINK_TRANSFORMATION
Installed: CLAS - ZSAPLINK_DOMAINS
Installed: CLAS - ZSAPLINK_DATA_ELEMENTS
Installed: CLAS - ZSAPLINK_TABLE_TYPES

```

### Installed Plugins (31):

CLAS ZSAPLINK\_BSP  
CLAS ZSAPLINK\_WTAG  
CLAS ZSAPLINK\_DOCUMENTATION  
CLAS ZSAPLINK\_FUNCTIONGROUP  
CLAS ZSAPLINK\_MESSAGE\_CLASS  
CLAS ZSAPLINK\_PDF\_FORMS  
CLAS ZSAPLINK\_SICF  
CLAS ZSAPLINK\_MIME  
CLAS ZSAPLINK\_SMARTFORM  
CLAS ZSAPLINK\_TABLE\_CONTENTS  
CLAS ZSAPLINK\_WD\_APPLICATION  
CLAS ZSAPLINK\_WD\_COMPONENT  
CLAS ZSAPLINK\_WD\_CONFIG\_APPL  
CLAS ZSAPLINK\_WD\_CONFIG\_COMP  
CLAS ZSAPLINK\_INDEX  
CLAS ZSAPLINK\_LOCK\_OBJECTS  
CLAS ZSAPLINK\_SEARCH\_HELPES  
CLAS ZSAPLINK\_TABLE\_TECH\_SETTINGS  
CLAS ZSAPLINK\_TABLES  
CLAS ZSAPLINK\_VIEW\_TECH\_SETTINGS  
CLAS ZSAPLINK\_VIEWS  
CLAS ZSAPLINK\_ENH\_IMPLEMENTATION  
CLAS ZSAPLINK\_ENH\_SPOT  
CLAS ZSAPLINK\_INTERFACE  
CLAS ZSAPLINK\_VIEW\_CLUSTER  
CLAS ZSAPLINK\_USER\_PARAMETER  
CLAS ZSAPLINK\_CHECKPOINT\_GROUP  
CLAS ZSAPLINK\_TRANSFORMATION  
CLAS ZSAPLINK\_DOMAINS  
CLAS ZSAPLINK\_DATA\_ELEMENTS  
CLAS ZSAPLINK\_TABLE\_TYPES

### Additional Plugins were installed in the following order!

2007\_CLAS\_ZSAPLINK\_BI\_INFOCUBE.slnk  
Only when SAP\_BW component is installed on the Netweaver!  
2007\_CLAS\_ZSAPLINK\_BI\_ODSO.slnk  
Installed: CLAS - ZSAPLINK\_BI\_ODSO  
2007\_CLAS\_ZSAPLINK\_REPORT\_VARIANTS.slnk  
Installed: CLAS - ZSAPLINK\_REPORT\_VARIANTS  
2007\_CLAS\_ZSAPLINK\_TRANSACTIONS.slnk  
Installed: CLAS - ZSAPLINK\_TRANSACTIONS  
2008\_CLAS\_ZSAPLINK\_TYPE\_GROUP.slnk  
Installed: CLAS - ZSAPLINK\_TYPE\_GROUP  
2009\_NUGG\_ZSAPLINK\_CLASSICAL\_BADI\_IMP.nugg  
CLAS ZSAPLINK\_BADI\_IMPLEMENTATIONS  
Installed: CLAS - ZSAPLINK\_BADI\_IMPLEMENTATIONS  
2009\_NUGG\_ZSAPLINK\_PDF\_INTERFACES.nugg  
CLAS ZSAPLINK\_PDF\_INTERFACES  
Installed: CLAS - ZSAPLINK\_PDF\_INTERFACES  
2010\_CLAS\_ZSAPLINK\_BW\_HIERARCHY-0.0.2.slnk  
Installed: CLAS - ZSAPLINK\_BW\_HIERARCHY

2010\_NUGG\_ZSAPLINK\_SMARTSTYLE.nugg  
CLAS ZSAPLINK\_SMARTSTYLE  
Installed: CLAS - ZSAPLINK\_SMARTSTYLE

2011\_PROG\_ZSAPLINK\_TRANSPORTER.slnk  
Installed: PROG - ZSAPLINK\_TRANSPORTER

2012\_CLAS\_ZSAPLINK\_WD\_CHIP.slnk  
Installed: CLAS - ZSAPLINK\_WD\_CHIP

2013\_CLAS\_ZSAPLINK\_SOTR.slnk  
Installed: CLAS - ZSAPLINK\_SOTR

2013\_CLAS\_ZSAPLINK\_WF.slnk  
Installed: CLAS - ZSAPLINK\_WF

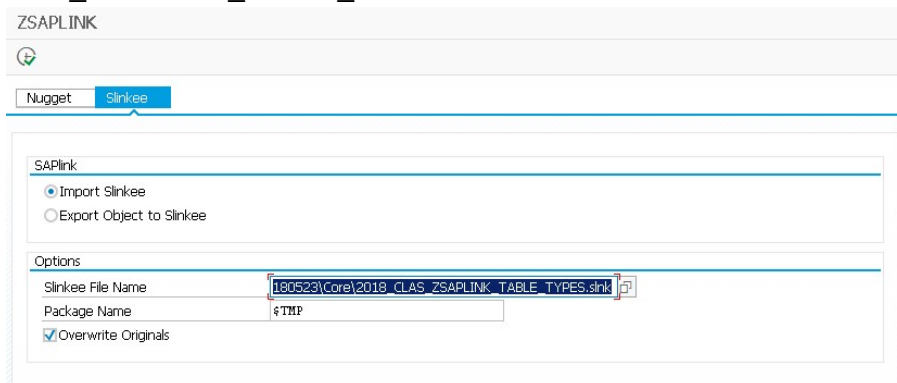
2013\_CLAS\_ZSAPLINK\_WF\_ACTOR\_RULE.slnk  
Installed: CLAS - ZSAPLINK\_WF\_ACTOR\_RULE

2013\_CLAS\_ZSAPLINK\_WF\_STASK.slnk  
Installed: CLAS - ZSAPLINK\_WF\_STASK

2013\_CLAS\_ZSAPLINK\_WF\_TEMPLATE.slnk  
Installed: CLAS - ZSAPLINK\_WF\_TEMPLATE

2014\_CLAS\_ZSAPLINK\_DEVC.slnk  
Installed: CLAS - ZSAPLINK\_DEVC

2018\_CLAS\_ZSAPLINK\_TABLE\_TYPES.slnk

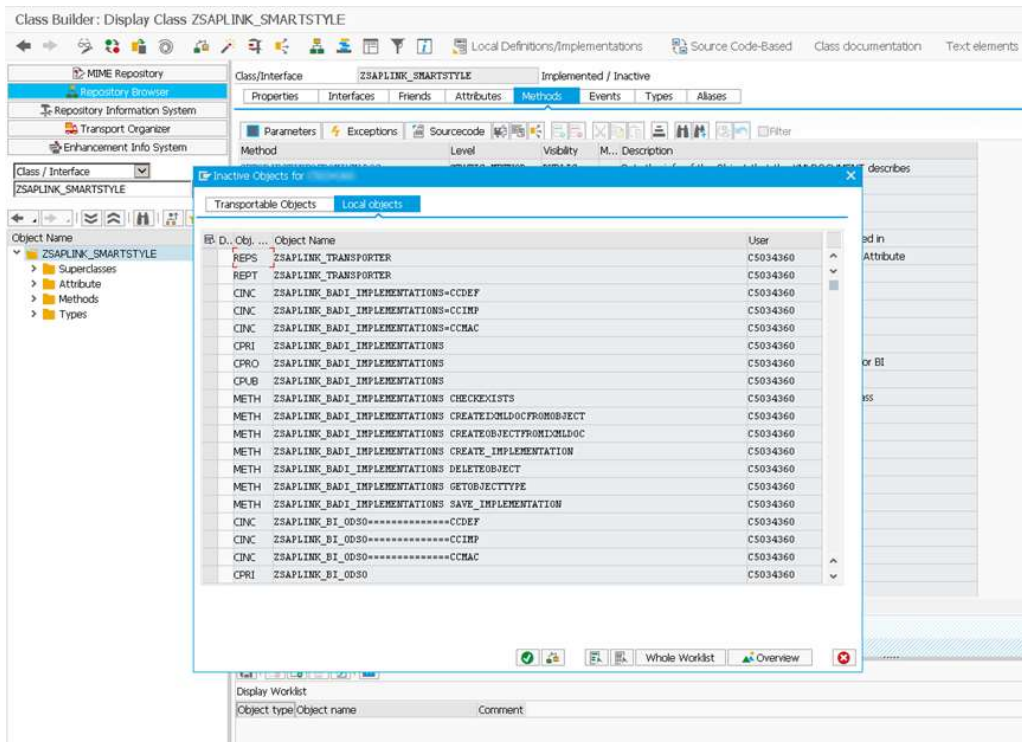


overwrite with newer version!

Installed: CLAS - ZSAPLINK\_TABLE\_TYPES

**After successfully imported all above plugins, don't forget to activate the newly generated ABAP objects!**

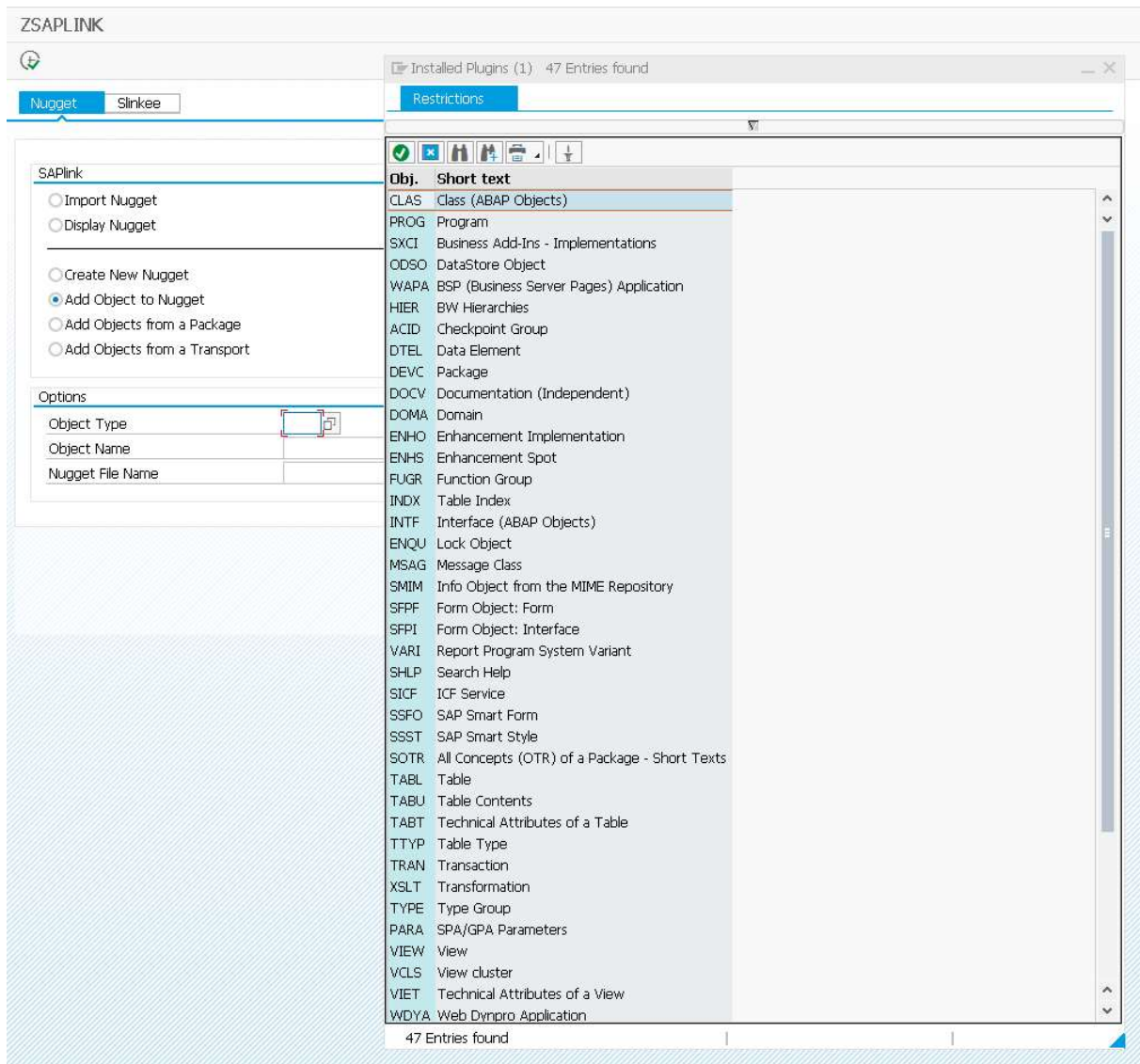




Goto SE80, select one of the class (e.g. ZSAPLINK\_SMARTSTYLE), select Activate. On the Activation popup screen push Whole Worklist button to display all inactive objects. Then select all of the inactive objects and press Activate (enter)!

## Check installed objects for SAPlink

Goto SE38 and start ZSAPLINK report.



CLAS	Class (ABAP Objects)
PROG	Program
SXCI	Business Add-Ins - Implementations
ODSO	DataStore Object
WAPA	BSP (Business Server Pages) Application
HIER	BW Hierarchies
ACID	Checkpoint Group
DTEL	Data Element
DEVC	Package
DOCV	Documentation (Independent)
DOMA	Domain
ENHO	Enhancement Implementation
ENHS	Enhancement Spot
FUGR	Function Group
INDX	Table Index
INTF	Interface (ABAP Objects)
ENQU	Lock Object
MSAG	Message Class
SMIM	Info Object from the MIME Repository
SFPF	Form Object: Form
SFPI	Form Object: Interface

VARI	Report Program System Variant
SHLP	Search Help
SICF	ICF Service
SSFO	SAP Smart Form
SSST	SAP Smart Style
SOTR	All Concepts (OTR) of a Package - Short Texts
TABL	Table
TABU	Table Contents
TABT	Technical Attributes of a Table
TTYP	Table Type
TRAN	Transaction
XSLT	Transformation
TYPE	Type Group
PARA	SPA/GPA Parameters
VIEW	View
VCLS	View cluster
VIET	Technical Attributes of a View
WDYA	Web Dynpro Application
WDPC	Web Dynpro CHIP
WDYN	Web Dynpro Component
WDCA	Web Dynpro Application Configuration
WDCC	Web Dynpro Component Configuration
PDAC	Standard rule
PDTS	Standard Task
PDWS	Workflow templates
WTAG	BSP Extension

## Supported object types by SAPlink converter

Object Type	Object Name	SAPlink plugin exist	SAPlink converter supports plugin
CLAS	Class (ABAP Objects)	X	X
DOMA	Domain	X	X
DTEL	Data Element	X	X
ENHO	Enhancement Implementation	X	X
ENHS	Enhancement Spot	X	X
ENQU	Lock Object	X	X
FUGR	Function Group	X	X
INTF	Interface (ABAP Objects)	X	X
MSAG	Message Class	X	X
PROG	Program	X	X
SHLP	Search Help	X	X
TABL	Table	X	X
TTYP	Table Type	X	X
VCLS	View cluster	X	X
VIEW	View	X	X
WAPA	BSP (Business Server Pages) Application	X	X
DEVC	Package	X	Planned
PDAC	Standard rule	X	Planned
PDTS	Standard Task	X	Planned
PDWS	Workflow templates	X	Planned
SFPF	Form Object: Form	X	Planned
SFPI	Form Object: Interface	X	Planned
SICF	ICF Service	X	Planned
SOTR	All Concepts (OTR) of a Package - Short Texts	X	Planned
SSFO	SAP Smart Form	X	Planned
SSST	SAP Smart Style	X	Planned
TRAN	Transaction	X	Planned
WDCA	Web Dynpro Application Configuration	X	Planned
WDCC	Web Dynpro Component Configuration	X	Planned
WDCP	Web Dynpro CHIP	X	Planned
WDYA	Web Dynpro Application	X	Planned
WDYN	Web Dynpro Component	X	Planned
WTAG	BSP Extension	X	Planned
XSLT	Transformation	X	Planned
ACID	Checkpoint Group	X	
DOCV	Documentation (Independent)	X	
HIER	BW Hierarchies	X	
INDX	Table index	X	
ODSO	DataStore Object	X	

PARA	SPA/GPA Parameters	X	
SXCI	Business Add-Ins - Implementations	X	
TABT	Technical Attributes of a Table	X	
TABU	Table Contents	X	
TYPE	Type Group	X	
VARI	Report Program System Variant	X	
VIET	Technical Attributes of a View	X	
APCO	Application components	No Plugin Available	
AREA	InfoArea	No Plugin Available	
AUTH	Authorization Check Fields	No Plugin Available	
CUS1	Customizing Transactions	No Plugin Available	
DCLS	ABAP Data Control Language Sources	No Plugin Available	
DDL5	Data Definition Language Source	No Plugin Available	
DSYS	Chapter of a Book Structure	No Plugin Available	
IOBJ	InfoObject	No Plugin Available	
IWMO	SAP Gateway Business Suite Enablement - Model	No Plugin Available	
IWOM	SAP Gateway: Model Metadata	No Plugin Available	
IWPR	SAP Gateway BSE - Service Builder Project	No Plugin Available	
IWSG	SAP Gateway: Service Groups Metadata	No Plugin Available	
IWSV	SAP Gateway Business Suite Enablement - Service	No Plugin Available	
IWVB	SAP Gateway Business Suite Enablement -Vocabulary Annotation	No Plugin Available	
NROB	Number Range Objects	No Plugin Available	
ROUT	Routine	No Plugin Available	
SAMC	ABAP Messaging Channels	No Plugin Available	
SAMC	ABAP Messaging Channels	No Plugin Available	
SAPC	Objecttype for APC	No Plugin Available	
SAPC	Objecttype for APC	No Plugin Available	
SHI3	General structure storage: Definition of a structure	No Plugin Available	
SHI5	Gen. hierarchy storage extension name	No Plugin Available	
SOBJ	Business object types	No Plugin Available	
STOB	Structured Object	No Plugin Available	
SUSC	Authorization object class	No Plugin Available	
SUSO	Authorization object	No Plugin Available	
TOBJ	Definition of a Maintenance and Transport Object	No Plugin Available	
TOBJ	Definition of a Maintenance and Transport Object	No Plugin Available	
WEBI	Virtual End Point	No Plugin Available	

## Disclaimer and Liability Notice

This material is provided by Enterprise Business Consulting Ltd. for informational purposes only, without representation or warranty of any kind, and Enterprise Business Consulting Ltd. shall not be liable for errors or omissions with respect to this material.

The information in this document is not a commitment, promise, or legal obligation to deliver any service, material, code, or functionality.

This document may discuss sample coding or other information that does not include SAP official interfaces and therefore is not supported officially by SAP. Changes made based on this information may not be supported and can be overwritten during an upgrade.

Enterprise Business Consulting Ltd. will not be held liable for any damages caused by using or misusing the information, code or methods suggested in this document, and anyone using these methods does so at his/her own risk.

Enterprise Business Consulting Ltd. offers no guarantees and assumes no responsibility or liability of any type with respect to the content of this technical article or code sample, including any liability resulting from incompatibility between the content within this document.

You agree that you will not hold, or seek to hold, Enterprise Business Consulting Ltd. responsible or liable with respect to the content of this document.